



📍 Albion House, 47 Bath Road, Atworth, Atworth, Wiltshire, SN12 8JT

🏠 Price Guide £795,000

There are so many superlatives to describe Albion House. This unique property has so many period features throughout its three floors and is believed to date from the 1700's, the deeds dating from 1804.

- 6 Bedroom Detached Period House
- Believed To Date From 1750
- Substantial And Quirky Accommodation
- Many Period Features Throughout
- Large Gardens To The Rear
- Off Road Parking With The Potential To Add More
- Village Location
- External Studio/Office With Wood Burning Stove
- Two Existing Work From Home Spaces With The Potential To Add A Granny Annex STP

🏡 Freehold

🏠 EPC Rating E



There are many superlatives to describe Albion House, a unique property with many period features throughout its three floors and believed to date from 1750. The front exterior of the property is Bath Stone, the sides Cotswold stone all nestling under a slate roof. The accommodation throughout is substantial, very niche and best described as shabby chic which compliments the property, its heritage and period charm. The ground floor has two bay windows to the front and one of the two front rooms are substantial, the entrance reception having flag stone flooring and both having feature fireplaces. The cosy rear sitting room with a working fire opens to the large kitchen with exposed Bath stone walls and open plan to the dining area which in turn leads to the large living room with exposed stone walls, exposed beams and French doors to the garden. Off the kitchen are stairs to the substantial landing with two bedrooms and a further landing area off. The master bedroom has built in wardrobes with exposed A frame timber beams and en suite facilities and exposed floor boards throughout this floor. The bathroom is situated to the front of the property with two further bedrooms either side, both of which have period stone fireplaces. Also off the main landing are stairs rising to the loft room with two further bedrooms, a smaller one with beds cleverly built into the eaves and a much larger bedroom with exposed A frame beams and storage space. These bedrooms are either side of a landing with could easily be utilised as a study area showing the properties versatility. Albion House is warmed by a mains gas fired central heating system. Externally there is a large garden laid to patio and lawn, large shed to the side, two stone storage rooms attached to the body of the house and a third with wood burning stove which was used as a workshop by the current owner. Subject to planning this could become a granny annex. Albion House has over 3500sq ft of internal floor space.

Situation

Atworth is a popular and sought after village surrounded by beautiful countryside and is approximately three miles from Corsham. The village offers a number of amenities including a public house, church, infant and primary school, garage / convenience store and, the superb Lowden Garden Centre with café. A short from the property itself leads to the play ground. There are further shops and facilities in the nearby towns of Bradford on Avon, Chippenham and Melksham provide a more comprehensive range of shopping facilities, schools and services. Atworth has good transport links to the M4 junction 17 and is within easy commuting distance of Bath (c.9 miles), Bristol and Swindon with regular buses running through the village. Rail services are available at Bath, Melksham and Chippenham providing hourly services to London Paddington.

Property information

Council Tax Band: E

Gas Fired Central Heating

EPC Rating:

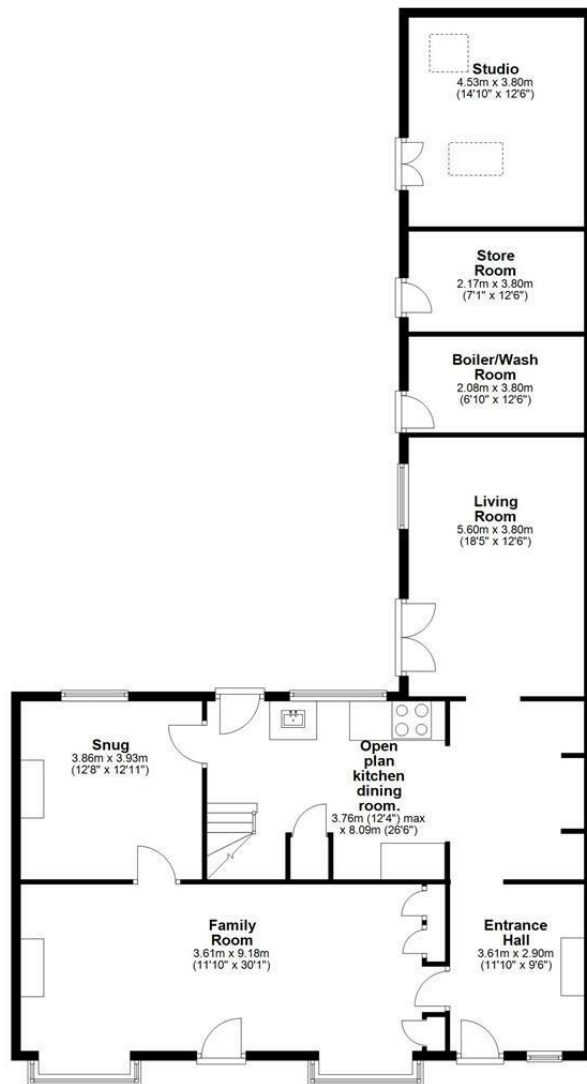
Off Road Parking

Versatile Accommodation Throughout

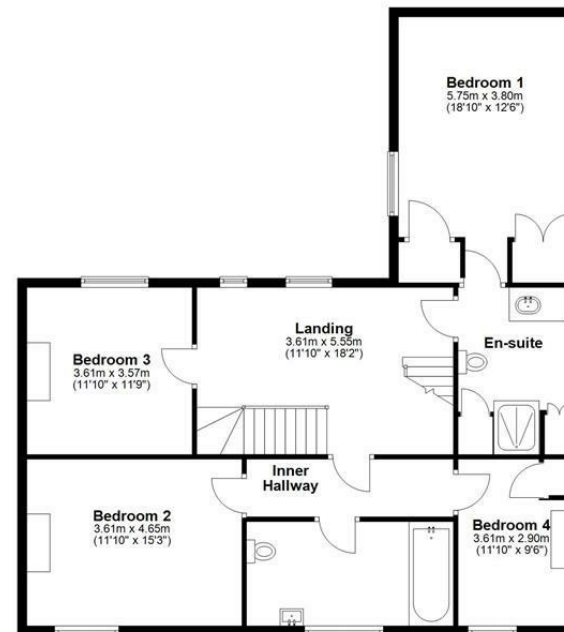
Large Rear Garden



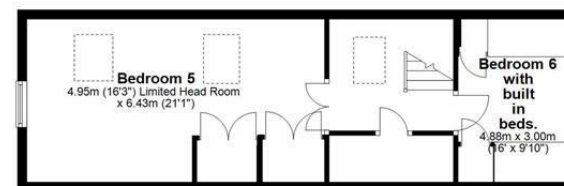
Ground Floor



First Floor



Second Floor



Disclaimer These particulars, whilst believed to be accurate are set out as a general outline only for guidance and do not constitute any part of an offer or contract. Intending purchasers should not rely on them as statements of representation of fact, but must satisfy themselves by inspection or otherwise as to their accuracy. No person in this firm's employment has the authority to make or give any representation or warranty in respect of the property. All measurements and distances are approximate only. Your home is at risk if you do not keep up repayments on a mortgage or other loan secured on it.